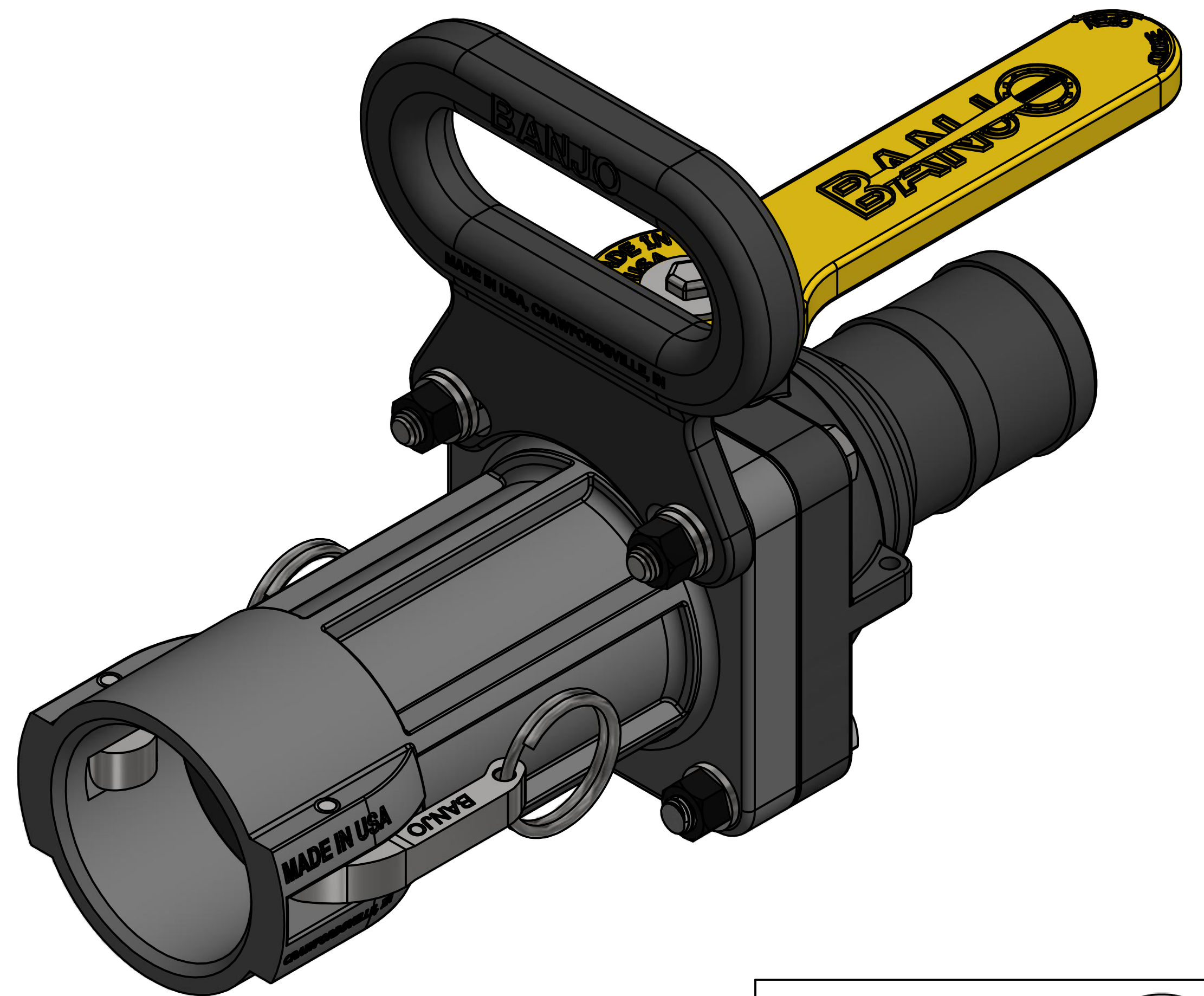
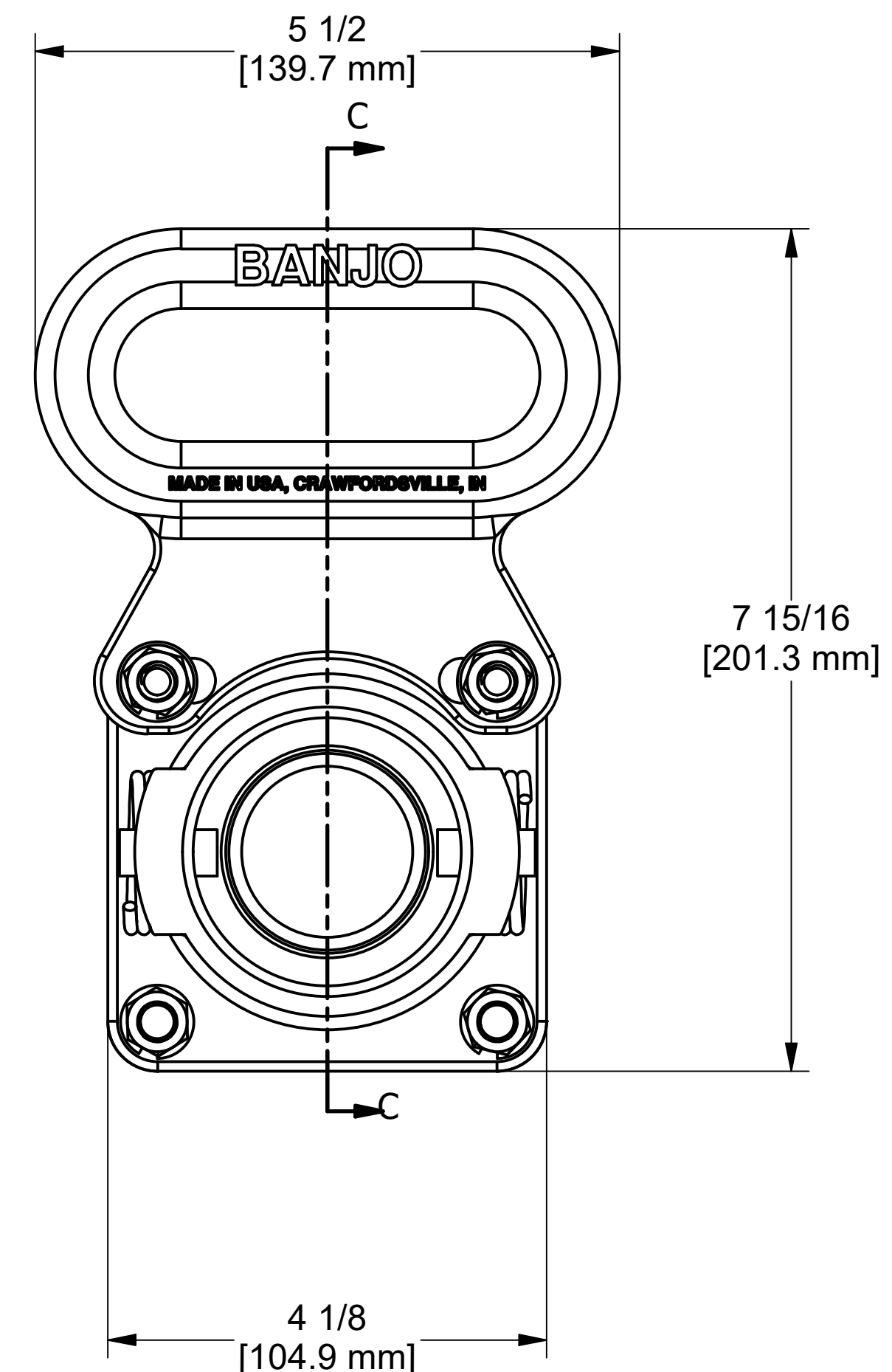
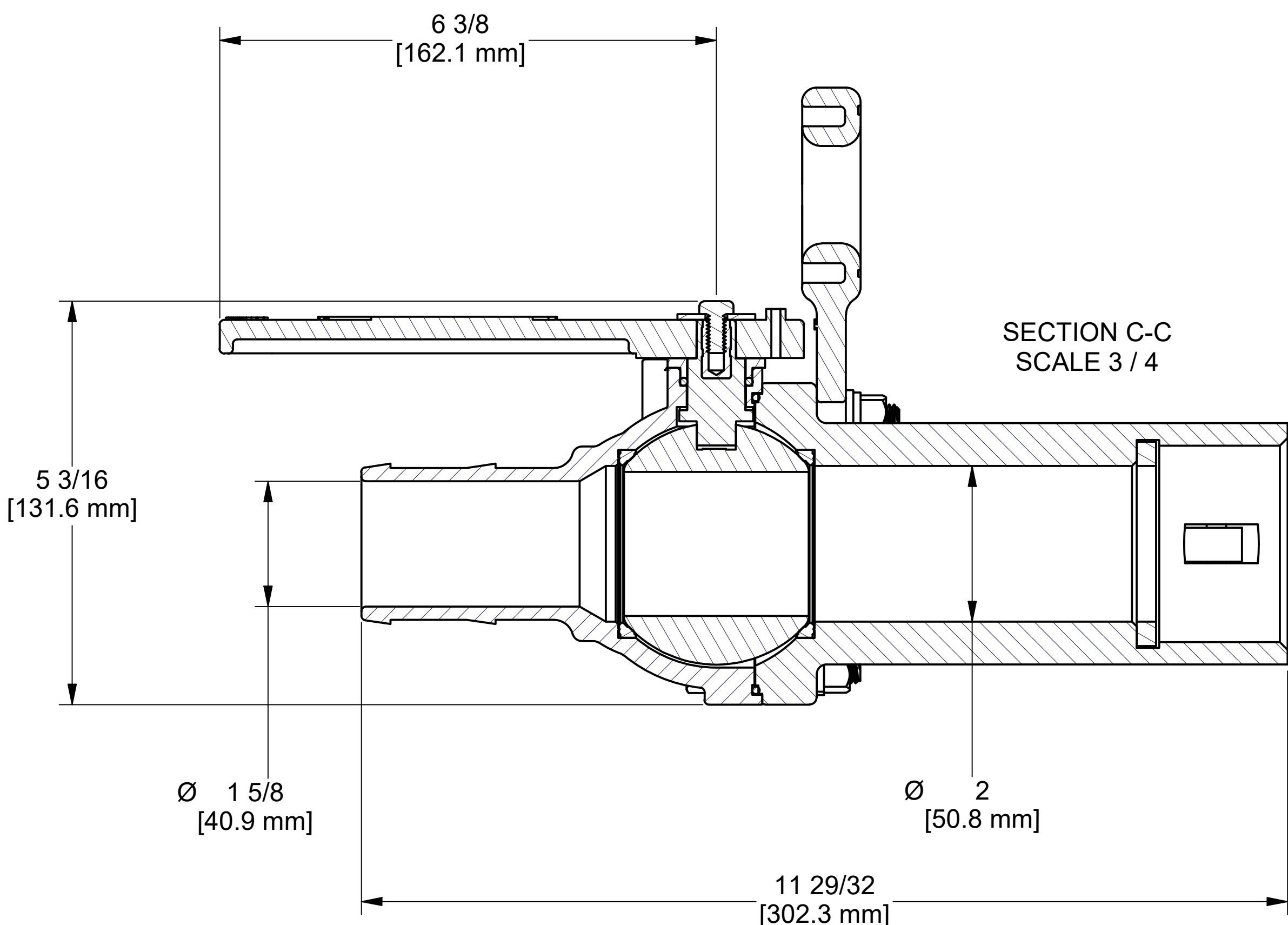
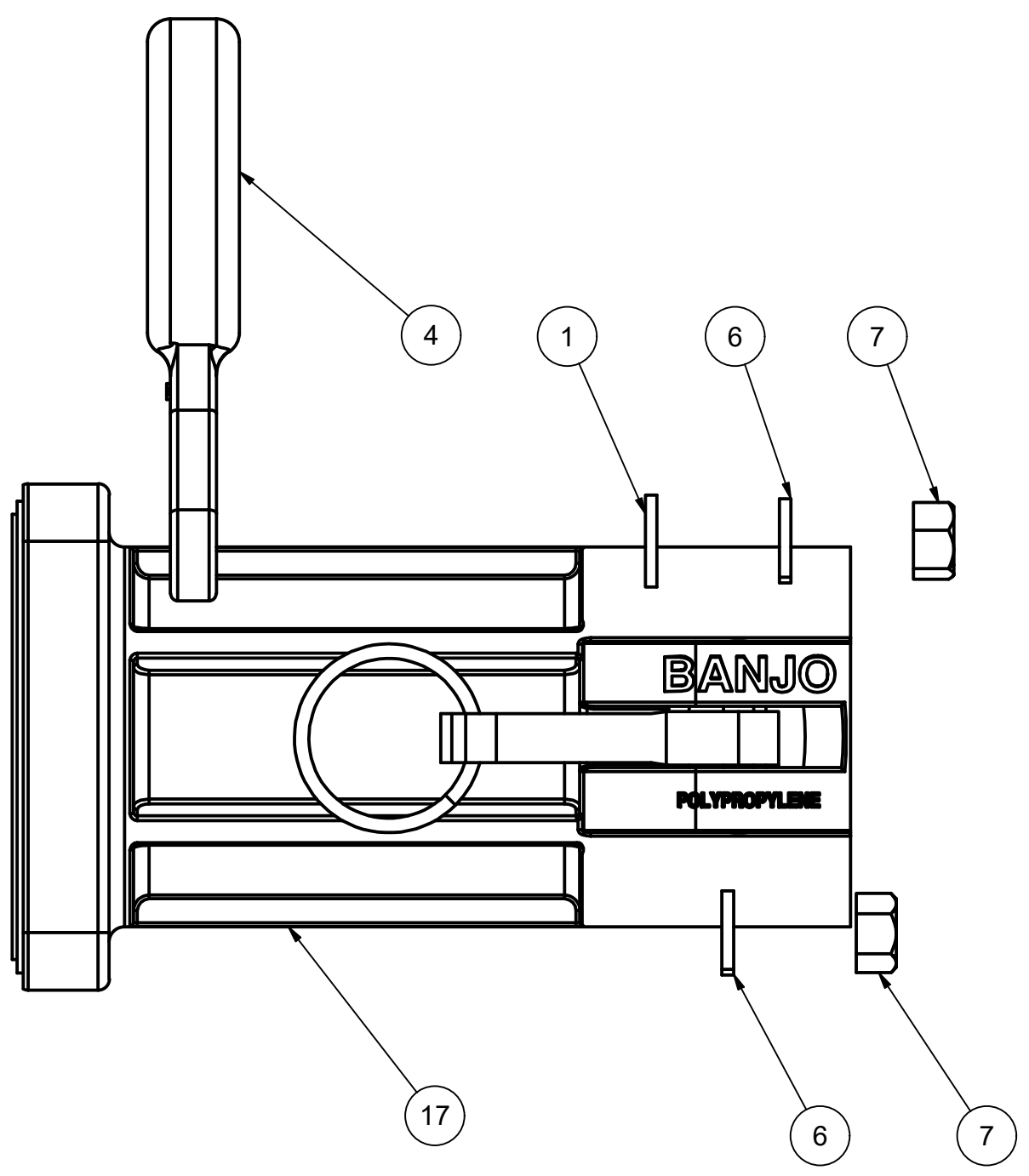
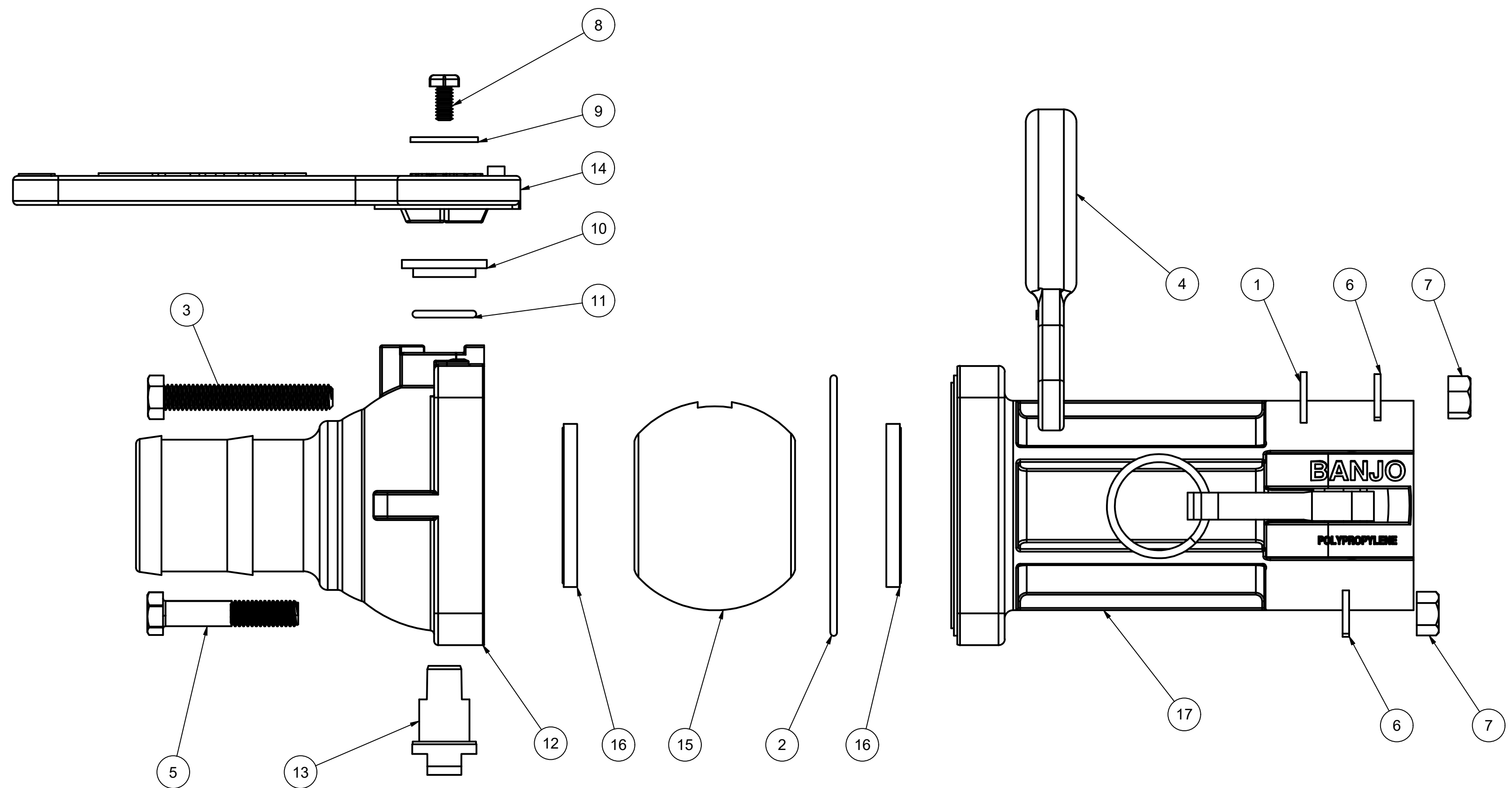


Parts List			
ITEM	QTY	PART NUMBER	DESCRIPTION
1	2	19766	3/8" FLAT WASHER
2	1	A93M250V	2.50 MM x 93 MM ID METRIC O-RING FKM BROWN
3	2	B038250	3/8-16 X 2 1/2" HHCS, ALL THD
4	1	H25053	2"-3" CARRY HANDLE
5	2	V20010SS	3/8-16 X 2" HHCS
6	4	V20018	3/8" LOCKWASHER
7	4	V20019	3/8" HEX NUT
8	1	V20020	2" handle Bolt
9	1	V20021	Handle Washer
10	1	V20159	2" STEM BUSHING
11	1	V20163	AS568A -116 O-RING, FKM, BROWN
12	1	VHB25254	2" FP HOSE BARB BODY
13	1	VS20151	VALVE STEM W/ BEARING
14	1	VS25153	2" FP STUBBY HANDLE
15	1	VS25255	2" Stubby Full Port Ball
16	2	VS25258AR1	3" FP Ball Seat
17	1	VSB25356A	2" FP EP 200 Coupler



THIS DRAWING AND ALL INFORMATION CONTAINED THEREON ARE THE EXCLUSIVE PROPERTY OF BANJO CORPORATION.

UNLESS SPECIFICALLY NOTED, THIS DRAWING AND ITEMS SHOWN ON THIS DRAWING ARE SUBJECT TO CHANGE AT ANY TIME.

BANJO CORPORATION
 150 BANJO DRIVE, CRAWFORDSVILLE, IN 47933
 WEB SITE: WWW.BANJO.CORP.COM
 E-MAIL: BANJOSALES@IDEXCORP.COM

DESCRIPTION
2" FP STUBBY VALVE HB X FEMALE COUPLER W/ CARRY HANDLE

PART NUMBER
VSBHB205FP